



Cloud Internet controllerM60

Product Specifications

Version: Ver.2.2

Statement

Dear user friend, thanks for choosing Shanghai Xixun Electronic Technology Co., Ltd. (hereinafter referred to as Xixun Technology) as your LED advertising equipment control system. The main purpose of this document is to help you quickly understand and use the product. We strive to be precise and reliable when writing the document, and the content may be modified or changed at any time without notice.

Copyright

The copyright of this document belongs to Xixun Technology. Without the written permission of our company, no unit or individual may copy or extract the content of this article in any form.

Trademark



is a registered trademark of Xixun Technology.

Update Record

Serial Number	Version Number	Description of content updates	Revision Date
1	Ver.1.0	Initial Release	2018.05.01
2	Ver.1.1	Picture Modification	2019.03.14
3	Ver.1.2	Parameters Correction	2019.10.18
4	Ver.2.0	Add Accessories	2020.03.04
5	Ver.2.1	Content change	2021.05.27
6	Ver.2.2	Content change	2021.07.07

Document contents are subject to change without prior notice.

1 Functional Characteristics

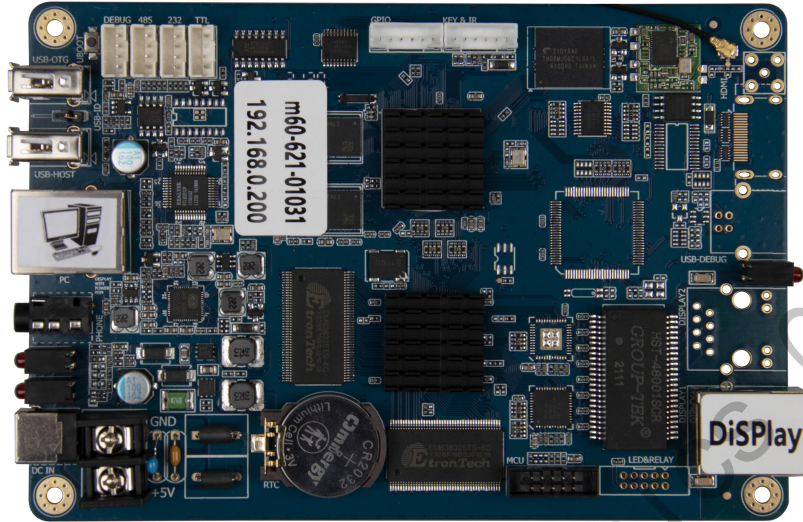
With the development of LED display industry, in some fields, it is necessary to support wireless transmission, need control card to access the network through WiFi, and need to be able to control through mobile phone. M60 product to meet the requirements, you can eliminate the wiring trouble, like a router for wireless network configuration.

1. Onboard WiFi module, realize wireless communication,
2. Support AP mode, Station mode;
3. Support secondary development, support cloud platform control;
4. Built-in Web Server, support for local web page production, support computer, iPhone, Android phone, tablet stand-alone program editing, cross-platform system fully compatible;
5. Video hard decoding, support 1080P;
6. Support mainstream video, picture formats and text editing;
7. Dual network ports with super load capacity, 1.3 million pixels, most wide 1920 pixel, highest 1080 pixel;
8. Support full color static to 32 scan module;
9. Conventional chips with high refresh, high brightness, and high grayscale; full chip support: support full range drivers IC such as Juji, Jichuangbeifang, Riyuecheng, Mingyang, etc;
10. Industrial-strength onboard Flash: 8GB;

11. Support USB camera;
12. The external brightness sensor can automatically adjust the brightness;
13. Support receiving card storage parameters ((It can be used with the seventh generation or above receiving card) ;
14. Supporting software: LedOK Express.

Shanghai Xixun Electronics Co., Ltd

2 Product Appearance

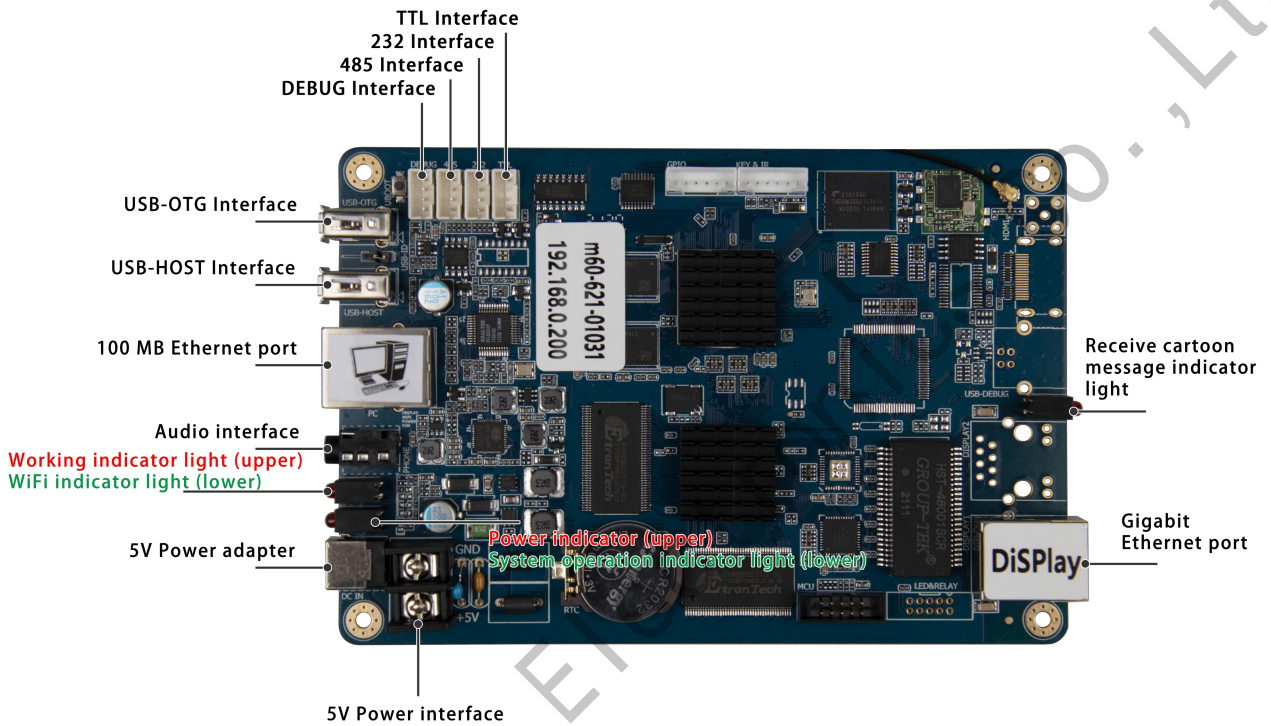


Product naked card appearance drawing



Product (with box) Appearance

3 Interface Parameters



Product interface annotations



【USB1】 USB-OTG;

【USB2】 USB-HOST;

【PC/NET】 Connect a PC or router;

【AUDIO】 3.5mm audio output;

【DISP】 FPGA working indicator (red light), normal uniform slow flashing;

【PWR】 Power indicator (red light), working normally;

【WiFi】 WiFi networking indicator (green light), normal connection uniform slow flash;

【RUN】 System operation indicator light (green light), system normal operation uniform slow flash;

【DC-IN】 DC5V3A Power input;



【1 LED-OUT 2】 Connect to the receiving card's Gigabit Ethernet port;

【OUT 2 OUT 1】 Receiving card communication indicator. When receiving card communication is normal, OUT1 indicator flashes green and OUT2 indicator flashes red;

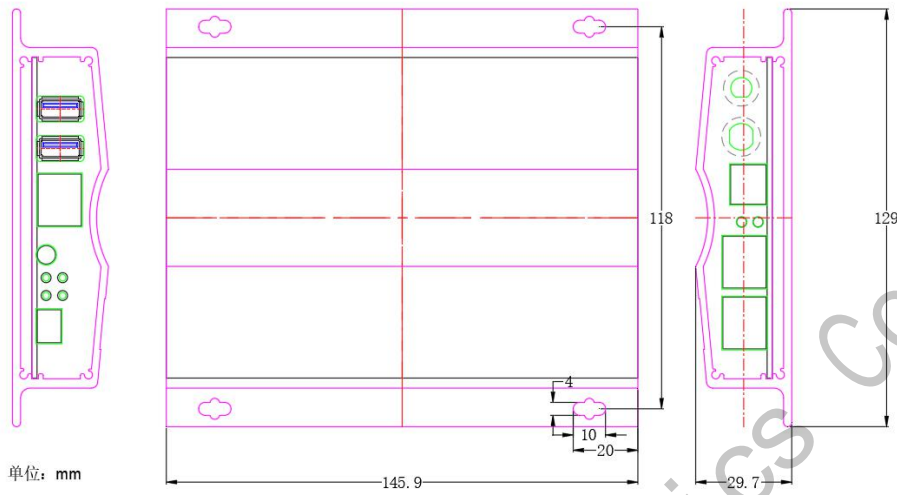
【SENSOR】 Connect R20E function card, integrate infrared, temperature, humidity, light probe interface, used to measure the ambient temperature and humidity and automatically adjust the screen brightness according to the ambient brightness;

【WiFi Antenna】 External WiFi antenna to enhance signal.

4 Working Conditions

General Parameters	
Working Voltage (V)	4.5 ~ 5.5
Maximum Working Current (A)	2
Maximum Working Power (W)	10
Working Temperature (°C)	- 25°C ~ +75°C
Storage Temperature (°C)	-40°C ~ 90°C, recommend 5°C ~ 35°C
Working Environment Humidity (%)	10% ~ 90%, No Condensation
Size (mm)	145.9 (length) × 129 (width) × 29.7 (height)
Weight (g)	400

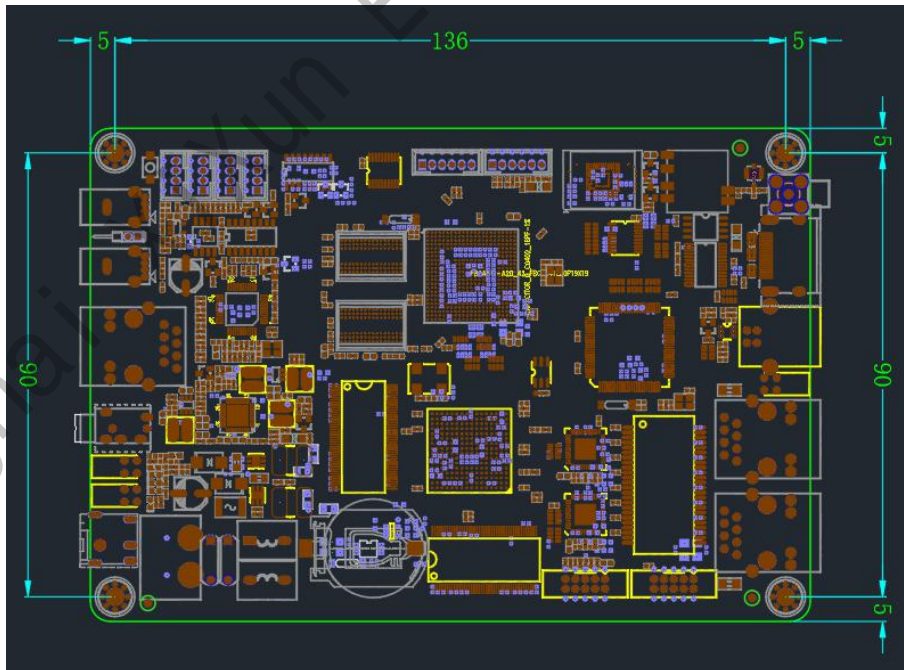
5 Installation Dimensions



Unit: mm

Box mounting dimensions drawing

Note: M60B is shipped with a standard box by default, please note that M60A has no external box when placing an order.



Unit: mm

Dimensions of bare panel installation

6 Accessories

The playback box comes with standard accessories	Bare card with standard accessories
WiFi Glue stick antenna x1	No WiFi antenna
5V3A power adapter x1	No power adapter

(If you need other accessories, please place an order)

M60B(Playback box with optional accessories	M60A bare card optional accessories
Luminance transducer RL3B (M60B playbox slection)	Luminance transducer RL3 (M60A bare card optional)

Matched Accessories (Optional, additional models are available according to the order)

7 Cautions

1. Forbidden to disassemble the product by yourself.
2. Do not plug or unplug antennas while while power is on.



Shanghai Xixun Electronics Co., Ltd